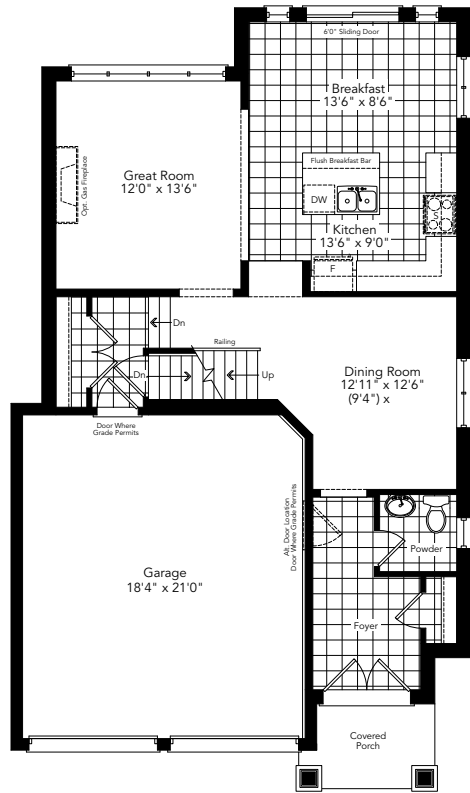


The Port

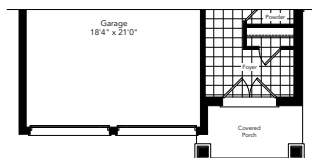


Elevation A 1999 sq.ft.

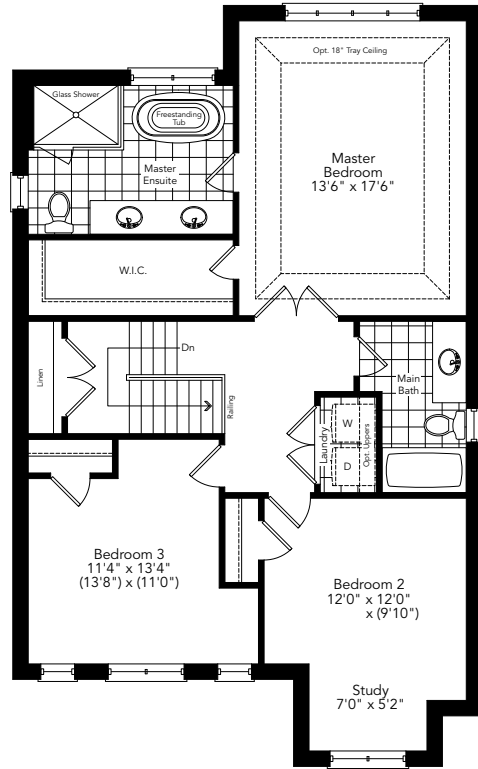
Elevation B 2041 sq.ft.



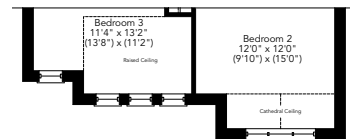
Ground Floor
Elevation A



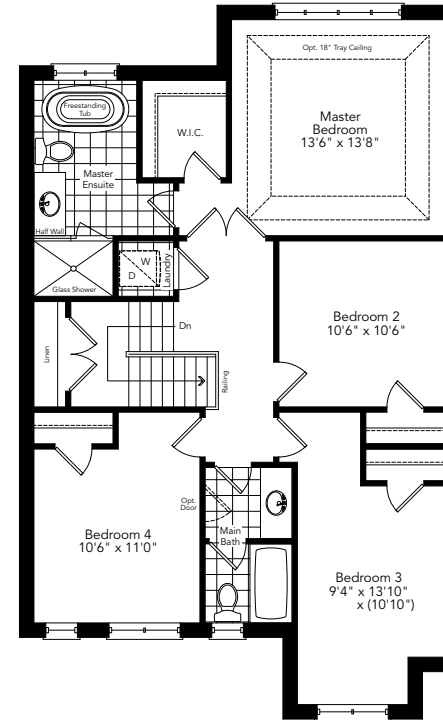
Partial Ground Floor
Elevation B



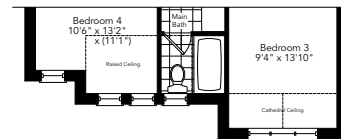
Second Floor
Elevation A



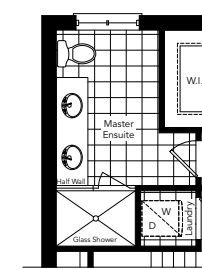
Partial Second Floor
Elevation B



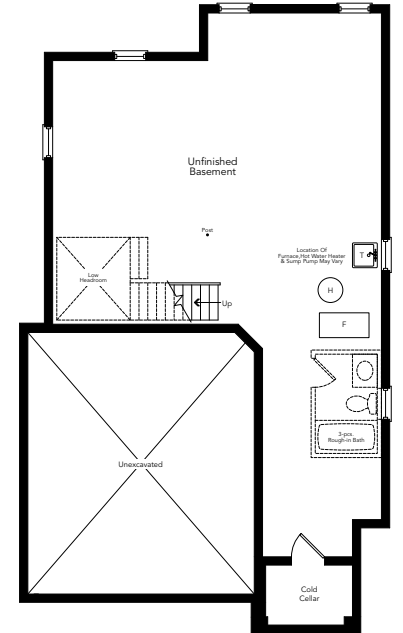
Second Floor
Optional 4 Bedroom Plan
Elevation A



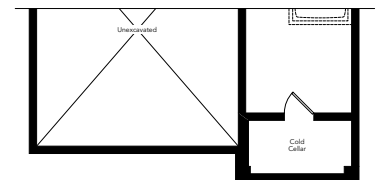
Partial Second Floor
Optional 4 Bedroom Plan
Elevation B



Optional Master Ensuite
For Optional Second Floor



Basement
Elevation A



Partial Basement
Elevation B